



REPUBLIK INDONESIA
KEMENTERIAN HUKUM DAN HAK ASASI MANUSIA

SURAT PENCATATAN CIPTAAN

Dalam rangka perlindungan ciptaan di bidang ilmu pengetahuan, seni dan sastra berdasarkan Undang-Undang Nomor 28 Tahun 2014 tentang Hak Cipta, dengan ini menerangkan:

Nomor dan tanggal permohonan : EC00202056403, 5 Desember 2020

Pencipta

Nama : **Edy Winarno, Imam Husni Al Amin dkk**
Alamat : Klipang Pesona Asri III Blok E No. 46 RT 10 / RW 28 Sendangmulyo
Tembalang, Semarang, JAWA TENGAH, 50242
Kewarganegaraan : Indonesia

Pemegang Hak Cipta

Nama : **Edy Winarno, Imam Husni Al Amin dkk**
Alamat : Klipang Pesona Asri III Blok E No.46 RT 10 / RW 28 Sendangmulyo
Tembalang, Semarang, JAWA TENGAH, 50272
Kewarganegaraan : Indonesia
Jenis Ciptaan : **Program Komputer**
Judul Ciptaan : **SISTEM PRESENSI BERBASIS PENGENALAN WAJAH MENGGUNAKAN
METODE HYBRID FEATURE EXTRACTION**

Tanggal dan tempat diumumkan untuk pertama kali di : 5 Desember 2020, di Semarang
wilayah Indonesia atau di luar wilayah Indonesia

Jangka waktu perlindungan : Berlaku selama 50 (lima puluh) tahun sejak Ciptaan tersebut pertama kali
dilakukan Pengumuman.

Nomor pencatatan : 000224600

adalah benar berdasarkan keterangan yang diberikan oleh Pemohon.

Surat Pencatatan Hak Cipta atau produk Hak terkait ini sesuai dengan Pasal 72 Undang-Undang Nomor 28 Tahun 2014 tentang Hak Cipta.

a.n. MENTERI HUKUM DAN HAK ASASI MANUSIA
DIREKTUR JENDERAL KEKAYAAN INTELEKTUAL



Dr. Freddy Harris, S.H., LL.M., ACCS.
NIP. 196611181994031001

Disclaimer:

Dalam hal pemohon memberikan keterangan tidak sesuai dengan surat pernyataan, Menteri berwenang untuk mencabut surat pencatatan pemohon.

LAMPIRAN PENCIPTA

No	Nama	Alamat
1	Edy Winarno	Klipang Pesona Asri III Blok E No. 46 RT 10 / RW 28 Sendangmulyo Tembalang
2	Imam Husni Al Amin	Jl. Gemah Selatan II No. 56 RT 07 / RW 06 Gemah Pedurungan
3	Wiwien Hadikurniawati	Jl. Banjarsari No. 10 C RT 01 / RW 02 Tembalang Tembalang
4	Muchamad Taufiq Anwar	Bandungan RT 06 / RW 01 Gedangan Tuntang

LAMPIRAN PEMEGANG

No	Nama	Alamat
1	Edy Winarno	Klipang Pesona Asri III Blok E No.46 RT 10 / RW 28 Sendangmulyo Tembalang
2	Imam Husni Al Amin	Jl. Gemah Selatan II No. 56 RT 07 / RW 06 Gemah Pedurungan
3	Wiwien Hadikurniawati	Jl. Banjarsari No. 10 C RT 01 / RW 02 Tembalang Tembalang
4	Muchamad Taufiq Anwar	Bandungan RT 06 / RW 01 Gedangan Tuntang



HAK CIPTA
PROGRAM KOMPUTER

**SISTEM PRESENSI BERBASIS PENGENALAN WAJAH MENGGUNAKAN
METODE HYBRID FEATURE EXTRACTION**

PENCIPTA

1. Edy Winarno
2. Imam Husni Al Amin
3. Wiwien Hadikurniawati
4. Muchamad Taufiq Anwar

UNIVERSITAS STIKUBANK SEMARANG

2020

DESKRIPSI

Sistem presensi berbasis pengenalan wajah menggunakan metode hybrid feature extraction digunakan sebagai aplikasi sistem presensi kehadiran. Presensi kehadiran digunakan untuk mendeteksi dan mengenali identitas seseorang dan kemudian disimpan sebagai basis data wajah. Sistem presensi kehadiran berbasis wajah yang dikembangkan pada penelitian ini adalah sistem presensi wajah menggunakan metode hybrid feature extraction. Metode ini merupakan sebuah pengembangan metode baru yang menggabungkan beberapa metode ekstraksi fitur dengan melakukan beberapa pembobotan pada setiap metode sehingga dapat dihasilkan sebuah metode ekstraksi fitur baru yang lebih akurat. Sistem presensi wajah ini diimplementasikan menggunakan arsitektur client-server yang diintegrasikan pada jaringan komputer. Model arsitektur server-client pada jaringan komputer ini bisa digunakan untuk mesin presensi wajah yang dapat diakses secara intranet maupun via online menggunakan internet. Sistem presensi wajah menggunakan kamera ini sangat aman dan akurat untuk mendeteksi user karena memiliki proses data yang lebih akurat dan ketelitian tinggi, sehingga dapat menghasilkan sebuah sistem yang handal dan kuat untuk mengidentifikasi wajah manusia. Penelitian presensi wajah ini dapat dimanfaatkan untuk model presensi wajah yang bisa menghasilkan data presensi yang dapat diakses secara online, realtime dan dapat digunakan pada tempat yang berbeda.

SPESIFIKASI CIPTAAN

1. Software menggunakan Bahasa pemrograman C++
2. Software implementasi menggunakan tool Open Computer Vision V.1.4.3
3. Peripheral menggunakan Dual Vision Camera dan VGA Camera
4. Software Sistem Presensi Wajah dapat digunakan hingga 250 database wajah
5. Software sistem presensi wajah dapat digunakan secara real-time dengan waktu pengujian

LISTING PROGRAM

```
#pragma once

#include <iostream>
#include <fstream>
#include <sstream>
#include <string>

#include "msclr\marshal_cppstd.h"
#include "stdafx.h"

#include "FormAbout.h"
#include "FormAdministrator.h"
#include "FormCamera.h"
#include "FormHowto.h"
#include "FormLogin.h"
#include "FormPhoto.h"
#include "FormReport.h"
#include "FormPerson.h"
#include "FormSetting.h"

#include "FTPHelper.h"

using namespace std;
using namespace System;
using namespace System::Collections;
using namespace System::ComponentModel;
using namespace System::Data;
using namespace System::Diagnostics;
using namespace System::Drawing;
using namespace System::Runtime::InteropServices;
using namespace System::Windows::Forms;

using namespace System::Data::SqlClient;
using namespace System::Configuration;
using namespace System::Data::Odbc;
using namespace System::Data::Common;
using namespace System::Data::OleDb;
using namespace System::Windows::Forms;

using namespace NameSpaceAbout;
using namespace NameSpaceAdministrator;
using namespace NameSpaceCamera;
using namespace NameSpaceHowto;
using namespace NameSpaceLogin;
using namespace NameSpacePhoto;
using namespace NameSpaceReport;
using namespace NameSpacePerson;
using namespace NameSpaceSetting;

using namespace NameSpaceFTPHelper;

namespace NameSpaceMain
{
    public ref class FormMain : public System::Windows::Forms::Form
    {
    {
        FormAbout^ formAbout;
        FormAdministrator^ formAdministrator;
        FormCamera^ formCamera;
        FormHowto^ formHowto;
        FormLogin^ formLogin;
        FormPhoto^ formPhoto;
        FormReport^ formReport;
        FormPerson^ formPerson;
        FormSetting^ formSetting;

        private: FTPHelper ^ ftpHelper;

        private: System::Windows::Forms::ToolStripMenuItem^ menuItemFile;
        private: System::Windows::Forms::ToolStripMenuItem^ submenuItemCamera;
        private: System::Windows::Forms::ToolStripMenuItem^ submenuItemLogin;
    }
    }
}
```

```

private: System::Windows::Forms::ToolStripMenuItem^ submenuitemLogout;
private: System::Windows::Forms::ToolStripMenuItem^ submenuitemExit;
private: System::Windows::Forms::ToolStripMenuItem^ menuitemAdministrasion;
private: System::Windows::Forms::ToolStripMenuItem^ submenuitemPhoto;

private: System::Windows::Forms::ToolStripMenuItem^ submenuitemPerson;

private: System::Windows::Forms::ToolStripMenuItem^ submenuitemReport;
private: System::Windows::Forms::ToolStripMenuItem^ submenuitemAdministrator;

private: System::Windows::Forms::ToolStripMenuItem^ bantuanToolStripMenuItem;
private: System::Windows::Forms::ToolStripMenuItem^ submenuitemHowto;
private: System::Windows::Forms::ToolStripMenuItem^ submenuitemAbout;
private: System::Windows::Forms::Timer^ timerLogin;
private: System::Windows::Forms::ToolStripMenuItem^ submenuitemSetting;

private: System::Windows::Forms::MenuStrip^ menuStrip;

public:
    FormMain(void)
    {
        InitializeComponent();
    }

protected:
    ~FormMain()
    {
        if (components)
        {
            delete components;
        }
    }

private: System::Windows::Forms::StatusStrip^ statusStrip;
private: System::Windows::Forms::ToolStripStatusLabel^ statusLabel;
private: System::Windows::Forms::ToolStripStatusLabel^ toolStripStatusLabel;
private: System::ComponentModel::IContainer^ components;

```

#pragma region Windows Form Designer generated code

```

        void InitializeComponent(void)
        {
            this->components = (gcnew
System::ComponentModel::Container());
            this->statusStrip = (gcnew
System::Windows::Forms::StatusStrip());
            this->toolStripStatusLabel = (gcnew
System::Windows::Forms::ToolStripStatusLabel());
            this->statusLabel = (gcnew
System::Windows::Forms::ToolStripStatusLabel());
            this->menuItemFile = (gcnew
System::Windows::Forms::ToolStripMenuItem());
            this->submenuitemCamera = (gcnew
System::Windows::Forms::ToolStripMenuItem());
            this->submenuitemLogin = (gcnew
System::Windows::Forms::ToolStripMenuItem());
            this->submenuitemLogout = (gcnew
System::Windows::Forms::ToolStripMenuItem());
            this->submenuitemExit = (gcnew
System::Windows::Forms::ToolStripMenuItem());
            this->menuitemAdministrasion = (gcnew
System::Windows::Forms::ToolStripMenuItem());
            this->submenuitemPhoto = (gcnew
System::Windows::Forms::ToolStripMenuItem());
            this->submenuitemPerson = (gcnew
System::Windows::Forms::ToolStripMenuItem());
            this->submenuitemReport = (gcnew
System::Windows::Forms::ToolStripMenuItem());
            this->submenuitemSetting = (gcnew
System::Windows::Forms::ToolStripMenuItem());
            this->submenuitemAdministrator = (gcnew
System::Windows::Forms::ToolStripMenuItem());
            this->bantuanToolStripMenuItem = (gcnew
System::Windows::Forms::ToolStripMenuItem());

```

```

System::Windows::Forms::ToolStripMenuItem();
System::Windows::Forms::ToolStripMenuItem();
System::Windows::Forms::MenuStrip();
System::Windows::Forms::Timer(this->components);
System::Drawing::Color::FromArgb(static_cast<System::Int32>(static_cast<System::Byte>(224)),
static_cast<System::Int32>(static_cast<System::Byte>(224)),
static_cast<System::Int32>(static_cast<System::Byte>(224)));
System::Windows::Forms::ToolStripItem^ >(2) {this->toolStripStatusLabel,
this->toolStripStatusLabel});
System::Drawing::Point(0, 727);
22);
L"toolStripStatusLabel";
System::Drawing::Size(0, 17);
17);
System::Drawing::ContentAlignment::MiddleLeft;
cli::array< System::Windows::Forms::ToolStripItem^ >(4) {this->submenuitemCamera,
>submenuitemLogout, this->submenuitemExit});
20);
L"submenuitemCamera";
System::Drawing::Size(114, 22);
System::EventHandler(this, &FormMain::submenuitemCamera_Click);
System::Drawing::Size(114, 22);
this->submenuitemHowto = (gcnew
this->submenuitemAbout = (gcnew
this->menuStrip = (gcnew
this->timerLogin = (gcnew
this->statusStrip->SuspendLayout();
this->menuStrip->SuspendLayout();
this->SuspendLayout();
//
// statusStrip
//
this->statusStrip->BackColor =
static_cast<System::Int32>(static_cast<System::Byte>(224)),
static_cast<System::Int32>(static_cast<System::Byte>(224)),
static_cast<System::Int32>(static_cast<System::Byte>(224)));
this->statusStrip->Items->AddRange(gcnew cli::array<
System::Windows::Forms::ToolStripItem^ >(2) {this->toolStripStatusLabel,
this->toolStripStatusLabel});
this->statusStrip->Location =
this->statusStrip->Name = L"statusStrip";
this->statusStrip->Size = System::Drawing::Size(932,
this->statusStrip->TabIndex = 6;
this->statusStrip->Text = L"statusStrip";
//
// toolStripStatusLabel
//
this->toolStripStatusLabel->Name =
this->toolStripStatusLabel->Size =
//
// statusLabel
//
this->statusLabel->AutoSize = false;
this->statusLabel->Name = L"statusLabel";
this->statusLabel->Size = System::Drawing::Size(650,
this->statusLabel->TextAlign =
//
// menuItemFile
//
this->menuItemFile->DropDownItems->AddRange(gcnew
this->menuItemFile->Name = L"menuItemFile";
this->menuItemFile->Size = System::Drawing::Size(53,
this->menuItemFile->Text = L"Berkas";
//
// submenuitemCamera
//
this->submenuitemCamera->Name =
this->submenuitemCamera->Size =
this->submenuitemCamera->Text = L"Kamera";
this->submenuitemCamera->Click += gcnew
//
// submenuitemLogin
//
this->submenuitemLogin->Name = L"submenuitemLogin";
this->submenuitemLogin->Size =
this->submenuitemLogin->Text = L>Login";

```

```

        this->submenuitemLogin->Click += gcnew
System::EventHandler(this, &FormMain::submenuitemLogin_Click);
//
// submenuitemLogout
//
        this->submenuitemLogout->Name =
L"submenuitemLogout";
        this->submenuitemLogout->Size =
System::Drawing::Size(114, 22);
        this->submenuitemLogout->Text = L"Logout";
        this->submenuitemLogout->Click += gcnew
System::EventHandler(this, &FormMain::submenuitemLogout_Click);
//
// submenuitemExit
//
        this->submenuitemExit->Name = L"submenuitemExit";
        this->submenuitemExit->Size =
System::Drawing::Size(114, 22);
        this->submenuitemExit->Text = L"Keluar";
        this->submenuitemExit->Click += gcnew
System::EventHandler(this, &FormMain::submenuitemExit_Click);
//
// menuitemAdministrasion
//
        this->menuitemAdministrasion->DropDownItems-
>AddRange(gcnew cli::array< System::Windows::Forms::ToolStripItem^ >(5) {this->submenuitemPhoto,
        this->submenuitemPerson, this-
>submenuitemReport, this->submenuitemSetting, this->submenuitemAdministrator});
        this->menuitemAdministrasion->Name =
L"menuitemAdministrasion";
        this->menuitemAdministrasion->Size =
System::Drawing::Size(85, 20);
        this->menuitemAdministrasion->Text =
L"Administrasi";
//
// submenuitemPhoto
//
        this->submenuitemPhoto->Name = L"submenuitemPhoto";
        this->submenuitemPhoto->Size =
System::Drawing::Size(117, 22);
        this->submenuitemPhoto->Text = L"Foto";
        this->submenuitemPhoto->Click += gcnew
System::EventHandler(this, &FormMain::submenuitemPhoto_Click);
//
// submenuitemPerson
//
        this->submenuitemPerson->Name =
L"submenuitemPerson";
        this->submenuitemPerson->Size =
System::Drawing::Size(117, 22);
        this->submenuitemPerson->Text = L"Orang";
        this->submenuitemPerson->Click += gcnew
System::EventHandler(this, &FormMain::submenuitemPerson_Click);
//
// submenuitemReport
//
        this->submenuitemReport->Name =
L"submenuitemReport";
        this->submenuitemReport->Size =
System::Drawing::Size(117, 22);
        this->submenuitemReport->Text = L"Laporan";
        this->submenuitemReport->Click += gcnew
System::EventHandler(this, &FormMain::submenuitemReport_Click);
//
// submenuitemSetting
//
        this->submenuitemSetting->Name =
L"submenuitemSetting";
        this->submenuitemSetting->Size =
System::Drawing::Size(117, 22);
        this->submenuitemSetting->Text = L"Aturan";
        this->submenuitemSetting->Click += gcnew
System::EventHandler(this, &FormMain::submenuitemSetting_Click);
//

```



```

// submenuitemAdministrator
//
this->submenuitemAdministrator->Name =
L"submenuitemAdministrator";
this->submenuitemAdministrator->Size =
System::Drawing::Size(117, 22);
this->submenuitemAdministrator->Text = L"Admin";
this->submenuitemAdministrator->Click += gcnew
System::EventHandler(this, &FormMain::submenuitemAdministrator_Click);
//
// bantuanToolStripMenuItem
//
>AddRange(gcnew cli::array< System::Windows::Forms::ToolStripItem^ >(2) {this->submenuitemHowto,
this->submenuitemAbout});
this->bantuanToolStripMenuItem->Name =
L"bantuanToolStripMenuItem";
this->bantuanToolStripMenuItem->Size =
System::Drawing::Size(63, 20);
this->bantuanToolStripMenuItem->Text = L"Bantuan";
this->bantuanToolStripMenuItem->Visible = false;
//
// submenuitemHowto
//
this->submenuitemHowto->Name = L"submenuitemHowto";
this->submenuitemHowto->Size =
System::Drawing::Size(141, 22);
this->submenuitemHowto->Text = L"Penggunaan";
this->submenuitemHowto->Click += gcnew
System::EventHandler(this, &FormMain::submenuitemHowto_Click);
//
// submenuitemAbout
//
this->submenuitemAbout->Name = L"submenuitemAbout";
this->submenuitemAbout->Size =
System::Drawing::Size(141, 22);
this->submenuitemAbout->Text = L"Tentang";
this->submenuitemAbout->Click += gcnew
System::EventHandler(this, &FormMain::submenuitemAbout_Click);
//
// menuStrip
//
this->menuStrip->BackColor =
System::Drawing::Color::FromArgb(static_cast<System::Int32>(static_cast<System::Byte>(224)),
static_cast<System::Int32>(static_cast<System::Byte>(224)),
static_cast<System::Int32>(static_cast<System::Byte>(224)));
this->menuStrip->Items->AddRange(gcnew cli::array<
System::Windows::Forms::ToolStripItem^ >(3) {this->menuItemFile, this->menuItemAdministrasion,
this->bantuanToolStripMenuItem});
this->menuStrip->Location =
System::Drawing::Point(0, 0);
this->menuStrip->Name = L"menuStrip";
this->menuStrip->Size = System::Drawing::Size(932,
24);
this->menuStrip->TabIndex = 12;
this->menuStrip->Text = L"Menu Utama";
//
// timerLogin
//
this->timerLogin->Tick += gcnew
System::EventHandler(this, &FormMain::timerLog_Tick);
//
// FormMain
//
this->AutoScaleDimensions =
System::Drawing::SizeF(6, 13);
this->AutoScaleMode =
System::Windows::Forms::AutoScaleMode::Font;
this->BackColor =
System::Drawing::Color::WhiteSmoke;
this->ClientSize = System::Drawing::Size(932, 749);
this->Controls->Add(this->statusStrip);
this->Controls->Add(this->menuStrip);

```

```

        this->IsMdiContainer = true;
        this->MainMenuStrip = this->menuStrip;
        this->Name = L"FormMain";
        this->StartPosition =
System::Windows::Forms::FormStartPosition::CenterScreen;
        this->Text = L"Aplikasi Kehadiran Pegawai";
        this->WindowState =
System::Windows::Forms::FormWindowState::Maximized;
        this->Load += gcnew System::EventHandler(this,
&FormMain::FormMain_Load);

        this->statusStrip->ResumeLayout(false);
        this->statusStrip->PerformLayout();
        this->menuStrip->ResumeLayout(false);
        this->menuStrip->PerformLayout();
        this->ResumeLayout(false);
        this->PerformLayout();
    }

```

```
#pragma endregion
```

```
//
```

```
=====
```

```
// FORM LOAD
//
```

```
=====
```

```

void FormMain_Load(System::Object^ sender,
System::EventArgs^ e)
{
    startForm();
}
//

```

```
=====
```

```
// SUBMENU
//
```

```
=====
```

```

private: System::Void submenutemCamera_Click(System::Object^ sender,
System::EventArgs^ e) {
    showCameraform();
}

```

```

private: System::Void submenutemLogin_Click(System::Object^ sender,
System::EventArgs^ e) {
    actLogin();
}

```

```

private: System::Void submenutemLogout_Click(System::Object^ sender,
System::EventArgs^ e) {
    actLogout();
}

```

```

private: System::Void submenutemExit_Click(System::Object^ sender,
System::EventArgs^ e) {
    Application::Exit();
}

```

```

private: System::Void submenutemPhoto_Click(System::Object^ sender,
System::EventArgs^ e) {
    showPhotoform();
}

```

```

private: System::Void submenutemPerson_Click(System::Object^ sender,
System::EventArgs^ e) {
    showPersonform();
}

```

```

        private: System::Void submenuItemReport_Click(System::Object^ sender,
System::EventArgs^ e) {
            showReportform();
        }

        private: System::Void submenuItemSetting_Click(System::Object^ sender,
System::EventArgs^ e) {
            showSettingform();
        }

        private: System::Void submenuItemAdministrator_Click(System::Object^ sender,
System::EventArgs^ e) {
            showAdministratorform();
        }

        private: System::Void submenuItemHowto_Click(System::Object^ sender,
System::EventArgs^ e) {
            showHowtoform();
        }

        private: System::Void submenuItemAbout_Click(System::Object^ sender,
System::EventArgs^ e) {
            showAboutform();
        }

        private: System::Void timerLog_Tick(System::Object^ sender,
System::EventArgs^ e) {
            checkLoginform();
        }

        private: void startForm()
        {
            ftphelper = gcnew FTPHelper();
            ftphelper->downloadFile("ftp://" + ftphelper->
>hostname + "/data_server/eye.xml", "data_client/eye.xml");
            ftphelper->downloadFile("ftp://" + ftphelper->
>hostname + "/data_server/face.xml", "data_client/face.xml");
            ftphelper->downloadFile("ftp://" + ftphelper->
>hostname + "/data_server/facedataasimetric.xml", "data_client/facedataasimetric.xml");
            ftphelper->downloadFile("ftp://" + ftphelper->
>hostname + "/data_server/haarcascade.xml", "data_client/haarcascade.xml");

            // ftphelper->
>deleteFile("ftp://" + ftphelper->hostname + "/picture.png");
            // ftphelper->
>checkFile("ftp://" + ftphelper->hostname + "/picture.png");
            // ftphelper->
>downloadFile("ftp://" + ftphelper->hostname + "/picture.png", "picture.png");
            // ftphelper->
>getList("ftp://" + ftphelper->hostname + "/");
            // ftphelper->
>getURIDate("ftp://" + ftphelper->hostname + "/picture.png");
            // ftphelper->
>getFiledate("picture.png");

            formAdministrator = gcnew FormAdministrator;
            formAdministrator->MdiParent = this;
            formAdministrator->Dock = DockStyle::None;

            formCamera = gcnew FormCamera;
            formCamera->MdiParent = this;
            formCamera->Dock = DockStyle::None;

            formLogin = gcnew FormLogin;
            formLogin->MdiParent = this;
            formLogin->Dock = DockStyle::None;

            formPhoto = gcnew FormPhoto;
            formPhoto->MdiParent = this;
            formPhoto->Dock = DockStyle::None;

            formReport = gcnew FormReport;
            formReport->MdiParent = this;
            formReport->Dock = DockStyle::None;

```

```

        formPerson = gcnew FormPerson;
        formPerson->MdiParent = this;
        formPerson->Dock = DockStyle::None;

        formSetting = gcnew FormSetting;
        formSetting->MdiParent = this;
        formSetting->Dock = DockStyle::None;

        formHowto = gcnew FormHowto;
        formHowto->MdiParent = this;
        formHowto->Dock = DockStyle::None;

        formAbout = gcnew FormAbout;
        formAbout->MdiParent = this;
        formAbout->Dock = DockStyle::None;

        actLogin();
    }

private: void showUsermenu()
{
    submenuItemLogout->Visible=false;
    menuItemAdministrasion->Visible=false;
    submenuItemLogout->Visible=false;
    submenuItemLogin->Visible=true;
    formCamera->gloverAdministratorflag = false;
    formCamera->labelPersonName->Visible = false;
    formCamera->comboBoxPersonsName->Visible = false;
    formCamera->buttonSave->Visible = false;
    formCamera->loadPersonsNameToCB();
}

private: void showAdminmenu()
{
    submenuItemLogout->Visible=true;
    menuItemAdministrasion->Visible=true;
    submenuItemLogout->Visible=true;
    submenuItemLogin->Visible=false;
    formCamera->gloverAdministratorflag = true;
    formCamera->labelPersonName->Visible = true;
    formCamera->comboBoxPersonsName->Visible = true;
    formCamera->buttonSave->Visible = true;
    formCamera->loadPersonsNameToCB();
}

private: void actLogin()
{
    formLogin->setLogflag();
    formLogin->resetForm();
    showUsermenu();
    showLoginform();
}

private: void showLoginform()
{
    timerLogin->Enabled=true;
    timerLogin->Start();
    formLogin->Show();
    formLogin->BringToFront();
}

private: void hideLoginform()
{
    timerLogin->Enabled=false;
    timerLogin->Stop();
    formLogin->Hide();
}

private: void checkLoginform()
{
    if(formLogin->getLogflag()==true)
    {
        timerLogin->Enabled=false;
    }
}

```

```

        timerLogin->Stop();
        hideLoginform();
        showAdminmenu();
    }
}

private: void actLogout()
{
    formLogin->setLogflag();
    showUsermenu();
    showLoginform();
}

private: void showCameraform()
{
    formCamera->gloverMinimizedflag = false;
    formCamera->Show();
    formCamera->startForm();
}

private: void showHowtoform()
{
    formHowto->Show();
}

private: void showAboutform()
{
    formAbout->Show();
}

private: void showPhotoform()
{
    if(formLogin->getLogflag()==true)
    {
        formPhoto->Show();
    }
}

private: void showPersonform()
{
    if(formLogin->getLogflag()==true)
    {
        formPerson->Show();
        formPerson->loadPersonsToPersonsDGV();
    }
}

private: void showReportform()
{
    if(formLogin->getLogflag()==true)
    {
        formReport->Show();
        formReport->startForm();
    }
}

private: void showSettingform()
{
    if(formLogin->getLogflag()==true)
    {
        formSetting->Show();
        formSetting->loadSetting();
    }
}

private: void showAdministratorform()
{
    if(formLogin->getLogflag()==true)
    {
        formAdministrator->Show();
        formAdministrator-
>loadAdministratorsToAdministratorsDGV();
    }
}
};

```

MANUAL BOOK

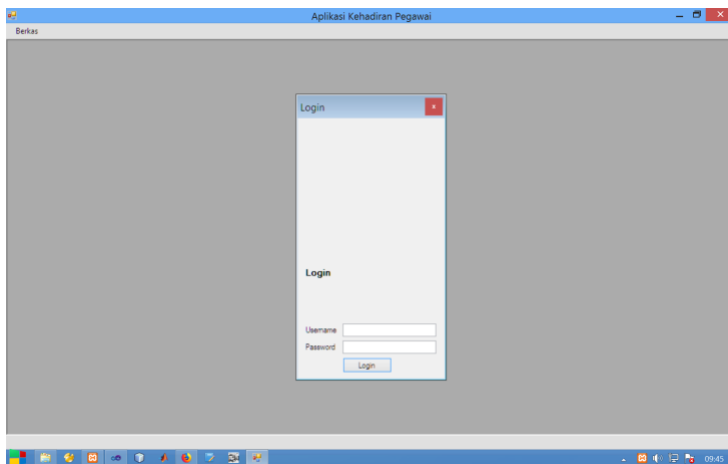
PENGGUNAAN PROGRAM KOMPUTER

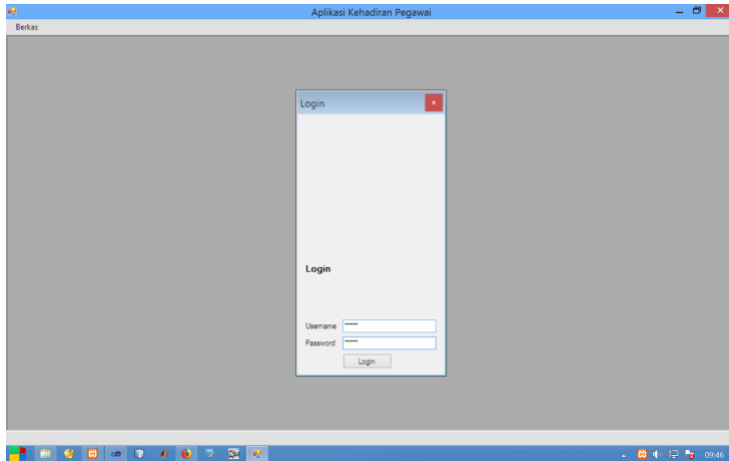
“SISTEM PRESENSI BERBASIS PENGENALAN WAJAH MENGGUNAKAN METODE HYBRID FEATURE EXTRACTION”

A. PROSES INSTALASI

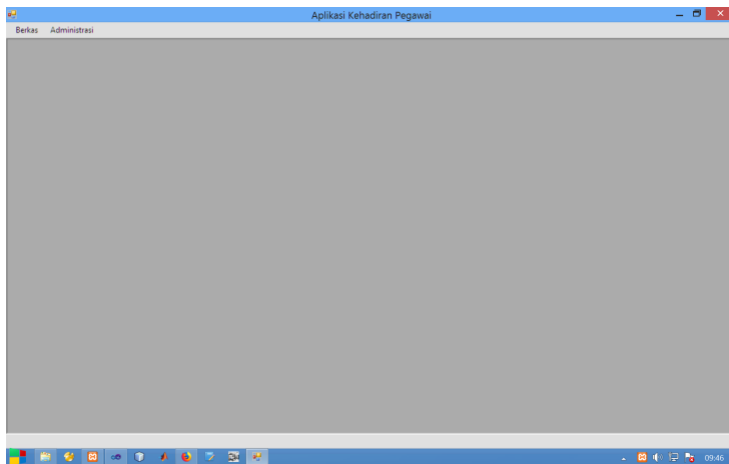
Proses instalasi dilakukan pada komputer berbasis windows dengan menginstall software OpenCV yang dapat diunduh secara open access (free) dari internet. Setelah OpenCV terinstall dengan benar maka program bisa dijalankan. Lakukan proses “RUN” pada file yang telah dibuka, sehingga tampilan dapat dilihat seperti di bawah ini:

1. Lakukan proses login

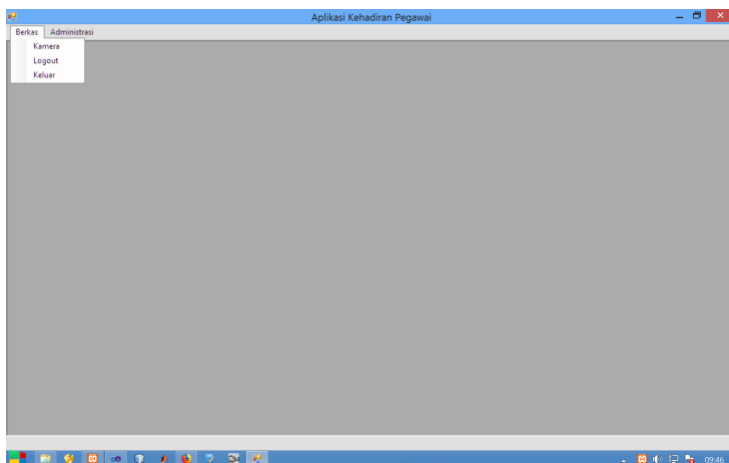




2. Lakukan proses pengisian database citra wajah pada berkas



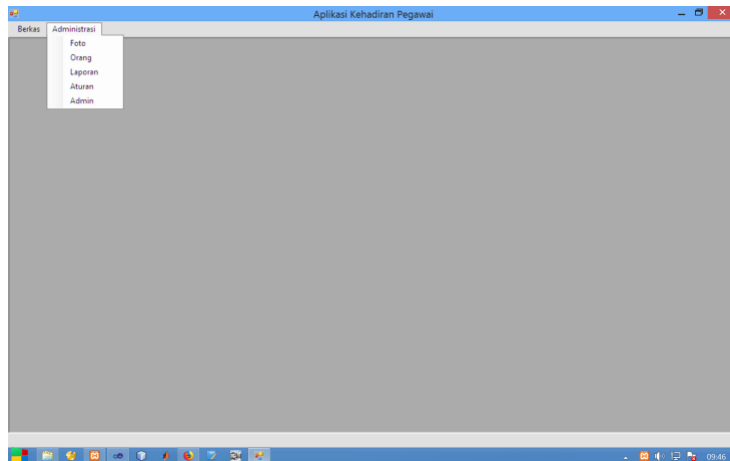
3. Lakukan pengambilan citra wajah untuk disimpan pada database wajah



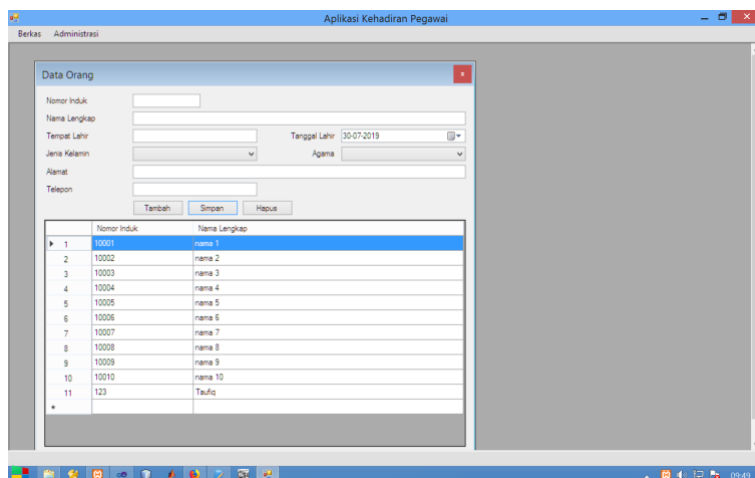
4. Pastikan wajah terdeteksi oleh kamera



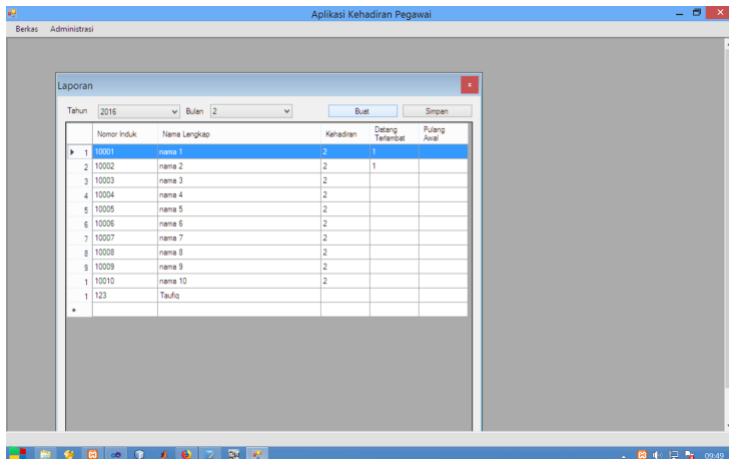
5. Lakukan proses pengisian pada menu Administrasi untuk menampilkan foto, orang, laporan, aturan dan manajemen Admin



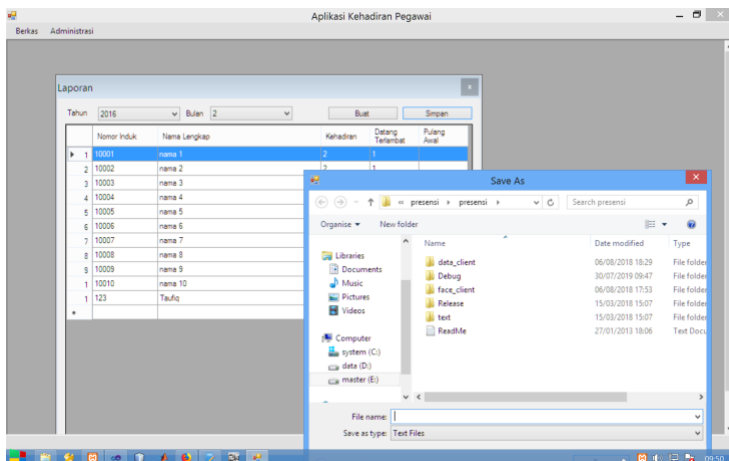
6. Lakukan pengisian data setiap wajah yang disimpan pada database



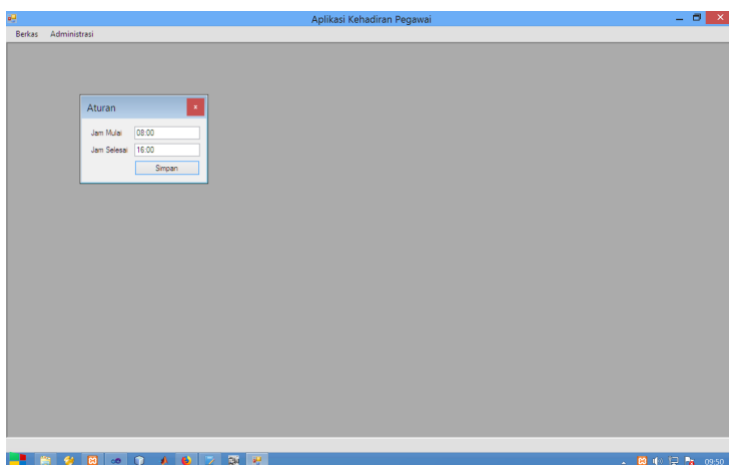
7. Pastikan data setiap wajah tersimpan secara benar



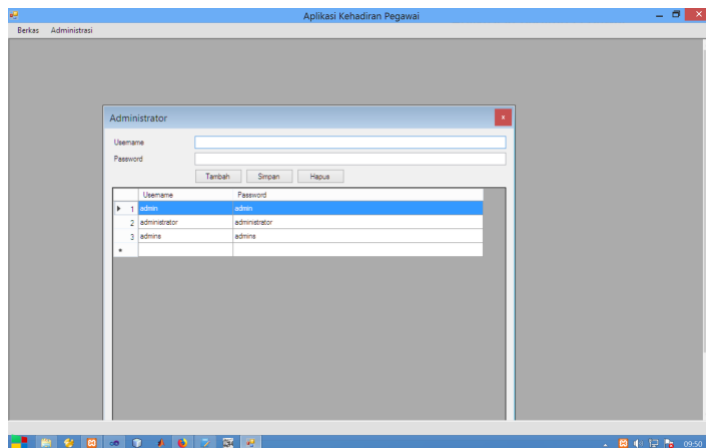
8. Lakukan proses penyimpanan setiap citra wajah yang disimpan



9. Atur waktu atau jam kehadiran dan kepulangan



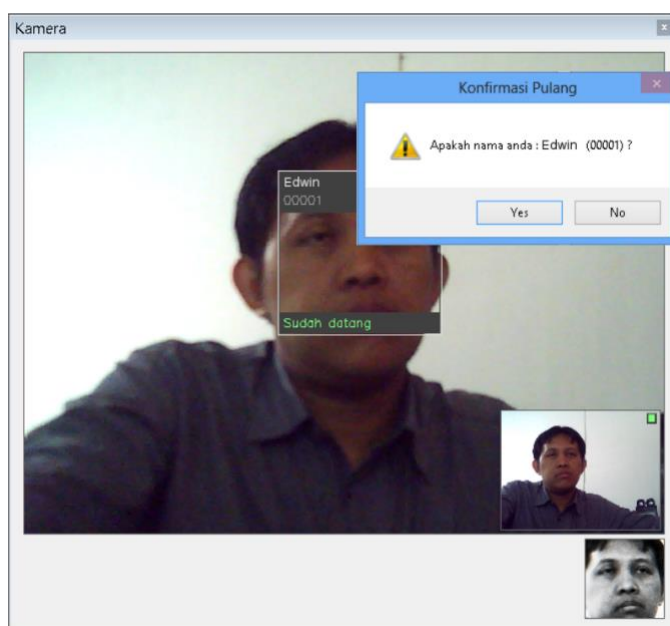
10. Tentukan hak admin untuk menentukan manajemen level administrasi



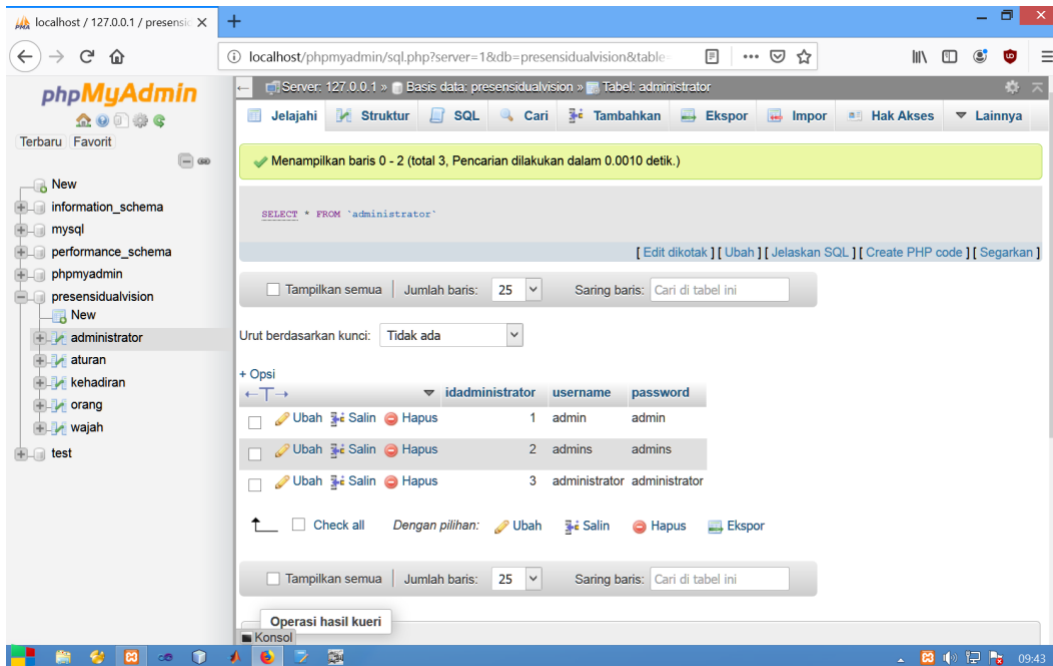
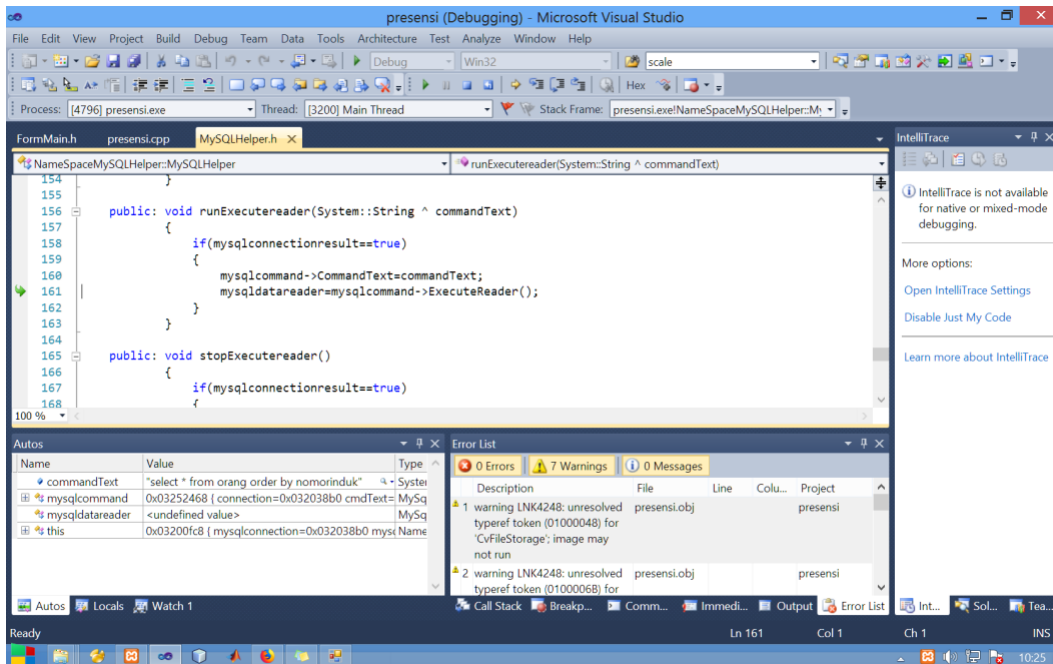
11. Lakukan proses penyimpanan setiap data wajah



12. Lakukan pengujian data wajah



LAMPIRAN



localhost / 127.0.0.1 / presensi: X

localhost/phpmyadmin/sql.php?server=1&db=presensidualvision&table

Server: 127.0.0.1 > Basis data: presensidualvision > Tabel: aturan

Menampilkan baris 0 - 0 (total 1, Pencarian dilakukan dalam 0.0342 detik.)

```
SELECT * FROM 'aturan'
```

[Edit dikotak] [Ubah] [Jelaskan SQL] [Create PHP code] [Segarkan]

Tampilkan semua | Jumlah baris: 25 | Saring baris: Cari di tabel ini

+ Opsi

	idaturan	jammasuk	jamkeluar
<input type="checkbox"/>	Ubah Salin Hapus	1	08:00:00 16:00:00

Check all Dengan pilihan: Ubah Salin Hapus Ekspor

Tampilkan semua | Jumlah baris: 25 | Saring baris: Cari di tabel ini

Operasi hasil kueri

Tampilkan cetak Ekspor Tampilkan bagan Buat tampilan

Markahi kueri SQL ini

Konsole

09:44

localhost / 127.0.0.1 / presensi: X

localhost/phpmyadmin/sql.php?server=1&db=presensidualvision&table

Server: 127.0.0.1 > Basis data: presensidualvision > Tabel: kehadiran

[Edit dikotak] [Ubah] [Jelaskan SQL] [Create PHP code] [Segarkan]

1 > >> Tampilkan semua | Jumlah baris: 25 | Saring baris: Cari di tabel ini

Urut berdasarkan kunci: Tidak ada

+ Opsi

	idkehadiran	idorang	tanggal	masuk	keluar
<input type="checkbox"/>	Ubah Salin Hapus	1	1	2016-01-01 08:15:00	15:45:00
<input type="checkbox"/>	Ubah Salin Hapus	2	2	2016-01-01 08:10:00	16:50:00
<input type="checkbox"/>	Ubah Salin Hapus	3	3	2016-01-01 08:05:00	16:55:00
<input type="checkbox"/>	Ubah Salin Hapus	4	4	2016-01-01 08:00:00	16:00:00
<input type="checkbox"/>	Ubah Salin Hapus	5	5	2016-01-01 08:00:00	16:00:00
<input type="checkbox"/>	Ubah Salin Hapus	6	6	2016-01-01 08:00:00	16:00:00
<input type="checkbox"/>	Ubah Salin Hapus	7	7	2016-01-01 08:00:00	16:00:00
<input type="checkbox"/>	Ubah Salin Hapus	8	8	2016-01-01 08:00:00	16:00:00
<input type="checkbox"/>	Ubah Salin Hapus	9	9	2016-01-01 08:00:00	16:00:00
<input type="checkbox"/>	Ubah Salin Hapus	10	10	2016-01-01 08:00:00	16:00:00
<input type="checkbox"/>	Ubah Salin Hapus	11	1	2016-01-02 08:00:00	16:00:00

Konsole

09:44

localhost / 127.0.0.1 / presensi: X

localhost/phpmyadmin/sql.php?server=1&db=presensidualvision&table

Server: 127.0.0.1 > Basis data: presensidualvision > Tabel: orang

Terbaru Favorit

- New
- information_schema
- mysql
- performance_schema
- phpmyadmin
- presensidualvision
 - New
 - administrator
 - aturan
 - kehadiran
 - orang
 - wajah
- test

Jelajahi
 Struktur
 SQL
 Cari
 Tambahkan
 Ekspor
 Impor
 Hak Akses
 Lainnya

+ Opsi

	idorang	nomorinduk	namalengkap	jeniskelamin	tanggallahir	tempatahir	agama	alamat			
<input type="checkbox"/>	Ubah	Salin	Hapus	1	10001	nama 1	1	1981-01-11	kota 1	1	alamat
<input type="checkbox"/>	Ubah	Salin	Hapus	2	10002	nama 2	2	1982-02-12	kota 2	2	alamat
<input type="checkbox"/>	Ubah	Salin	Hapus	3	10003	nama 3	1	1983-03-13	kota 3	3	alamat
<input type="checkbox"/>	Ubah	Salin	Hapus	4	10004	nama 4	2	1984-04-14	kota 4	4	alamat
<input type="checkbox"/>	Ubah	Salin	Hapus	5	10005	nama 5	1	1985-05-15	kota 5	5	alamat
<input type="checkbox"/>	Ubah	Salin	Hapus	6	10006	nama 6	2	1986-06-16	kota 6	1	alamat
<input type="checkbox"/>	Ubah	Salin	Hapus	7	10007	nama 7	1	1987-07-17	kota 7	2	alamat
<input type="checkbox"/>	Ubah	Salin	Hapus	8	10008	nama 8	2	1988-08-18	kota 8	3	alamat
<input type="checkbox"/>	Ubah	Salin	Hapus	9	10009	nama 9	1	1989-09-19	kota 9	4	alamat
<input type="checkbox"/>	Ubah	Salin	Hapus	10	10010	nama 10	2	1990-10-20	kota 10	5	alamat 10
<input type="checkbox"/>	Ubah	Salin	Hapus	123	123	Taufiq	0	1890-01-01	SMG	0	SMG

Check all
 Dengan pilihan:
 Ubah
 Salin
 Hapus
 Ekspor

Konsol

localhost / 127.0.0.1 / presensi: X

localhost/phpmyadmin/sql.php?server=1&db=presensidualvision&table

Server: 127.0.0.1 > Basis data: presensidualvision > Tabel: wajah

Terbaru Favorit

- New
- information_schema
- mysql
- performance_schema
- phpmyadmin
- presensidualvision
 - New
 - administrator
 - aturan
 - kehadiran
 - orang
 - wajah
- test

Jelajahi
 Struktur
 SQL
 Cari
 Tambahkan
 Ekspor
 Impor
 Hak Akses
 Lainnya

+ Opsi

	idwajah	idorang	idmuka			
<input type="checkbox"/>	Ubah	Salin	Hapus	1	1	1
<input type="checkbox"/>	Ubah	Salin	Hapus	2	1	2
<input type="checkbox"/>	Ubah	Salin	Hapus	3	1	3
<input type="checkbox"/>	Ubah	Salin	Hapus	4	2	1
<input type="checkbox"/>	Ubah	Salin	Hapus	5	2	2
<input type="checkbox"/>	Ubah	Salin	Hapus	6	2	3
<input type="checkbox"/>	Ubah	Salin	Hapus	7	3	1
<input type="checkbox"/>	Ubah	Salin	Hapus	8	3	2
<input type="checkbox"/>	Ubah	Salin	Hapus	9	3	3
<input type="checkbox"/>	Ubah	Salin	Hapus	10	4	1
<input type="checkbox"/>	Ubah	Salin	Hapus	11	4	2
<input type="checkbox"/>	Ubah	Salin	Hapus	12	4	3
<input type="checkbox"/>	Ubah	Salin	Hapus	13	5	1
<input type="checkbox"/>	Ubah	Salin	Hapus	14	5	2
<input type="checkbox"/>	Ubah	Salin	Hapus	15	5	3

Konsol